



13 June 2012

**The energy saving co-operative**  
Oxfordshire Environment Partnership

**Who we are**

The **energy saving co-operative** is a **pioneering partnership** between:

- 1. People** who want to **save energy**
- 2. Co-operatives** and **community groups**
- 3. Tradespeople** such as **energy assessors** and **installers**

**Working together**, we will **maximise our impact** – combining the **best of 'Big'** with the **best of 'Local'**

**Our backers**

**Midlands Co-operative Society**

- The largest independent co-operative society in the UK
- Geographical coverage across the West and East Midlands
- 992,000 members; 2011-12 revenues £978m
- Committed investment and support to **The energy saving co-operative** in January 2012

**Midcounties Co-operative Society**

- The 2<sup>nd</sup> largest independent co-operative society in the UK
- Geographical coverage across: **Oxfordshire**, Gloucestershire, Buckinghamshire, Shropshire, Staffordshire, the West Midlands, Wiltshire and Worcestershire
- 245,000 members; 2011-12 revenues £788m
- Launched **The co-operative energy** in May 2011
  - Proposal for investment and support for **The energy saving co-operative** at June 22<sup>nd</sup> Board meeting

**Broader membership**

- Members in all three classes:
  1. Individual people,
  2. Co-operatives and community groups,

**Our purpose, vision and values**

**Purpose**  
To provide people with the power to save energy

**Vision**  
The greatest contribution to UK energy saving will be through co-operative and community solutions

**Values**  
We are open, honest and fair  
We serve our customer members  
We enhance sustainable communities  
We earn trust in everything we do  
We are democratic

**Governance and profit sharing**

The **energy saving co-operative** is an innovative, pioneering hybrid co-operative (IPS 31331R), with three classes of user-membership:

- 1. Individuals** using the services of the co-operative – **Homeowners can become members**
- 2. Co-operatives and other corporate or community bodies** offering the co-operative's services – **Consumer co-ops and community groups can become members**
- 3. Persons and organisations delivering the services** of the co-operative – **Tradespeople can become members**

Each user-membership class shares in governance and profits, and has dedicated seats on the Board

There is a fourth category of membership for providers of finance (non-user members, with maximum 25% voting strength and limited right to profits)

**Our pilot community partners**



**NORTHFIELD ECO CENTRE**  
Southern Staffordshire Community Energy

We have carefully selected our first community partners based upon capabilities, demonstrated track record, and fit with our consumer co-op backers' geographical footprints

### Oxfordshire pilot

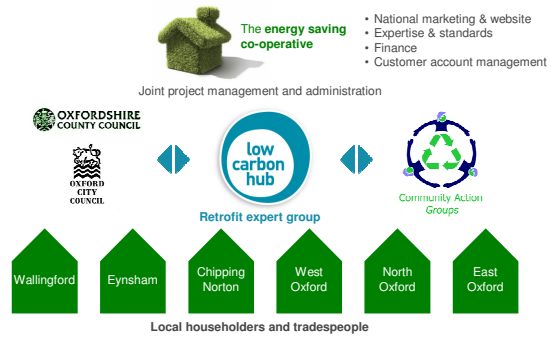
We are partnering with the **Low Carbon Hub** on to help 200 homes across Oxfordshire **Power Down** during 2012:

- Giving **free, straightforward and honest advice** on which energy-saving improvements make sense
- Installing through **trusted local tradespeople, benefitting the Oxfordshire community**
- Providing **fair and ethical finance** for those who need it

As a co-operative, we buy on our members' behalves to deliver **the greatest energy savings at the best price** – and **return profits to our members through dividends**

7

### Oxfordshire working relationships



### What we ask of Oxfordshire Environment Partnership

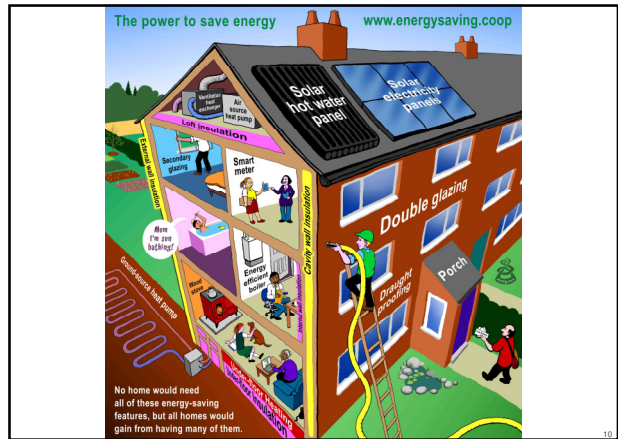
**Support us** to help communities across **Oxfordshire Power Down**

**Join us** in membership class 2 (Co-operatives and other corporate or community bodies) to provide:

- A say in governance
- A share in profits via dividends
- A **demonstration of local commitment** to help us focus community engagement

If you would like to find out more, please **let's discuss in Session 2...**

8

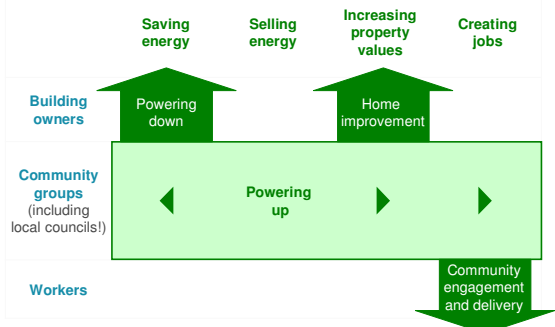


10

*"The best time to plant a tree was 20 years ago; The second best time .... is now !!!"*

– Chinese proverb

### Oxfordshire's collective and co-operative interest



### Oxfordshire learnings to date

Early adopter customers are 'campaigners', motivated by a desire to make a contribution to saving energy and carbon. They are existing members of environmental community groups.

'Triggers' include:

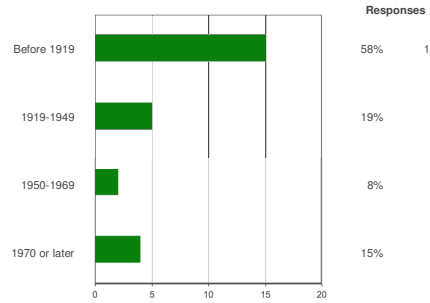
- A planned disruptive project, such as a kitchen or extension
- An opportunity presented by a new home
- A desire to 'harvest' renewable resources, such as solar PV or HW and ground-sourced heat

Common Oxfordshire project elements will include:

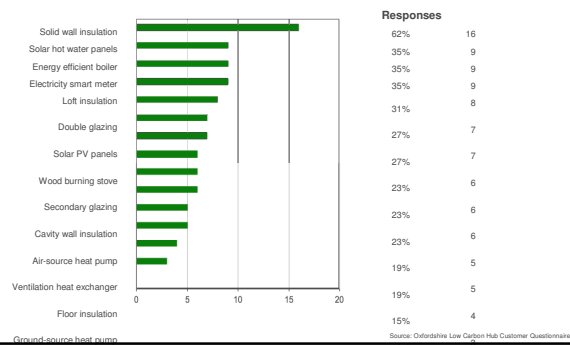
- External solid wall insulation, 'white van man' solution, back of house
- Solar HW connected to a thermal store for heating + hot water
- Energy efficient sash windows, carpenter / joiner solution

All customers to date are likely to finance the project themselves, although some may be interested in an easy access ethical finance solution

### Oxford City age of homes



### Oxford City interest in energy saving improvements



Ground-source heat pump